

# User Manual

Version 2.0  
Revision Date: 09/21/2015

**Product name:** 1 Kb DNA Ladder

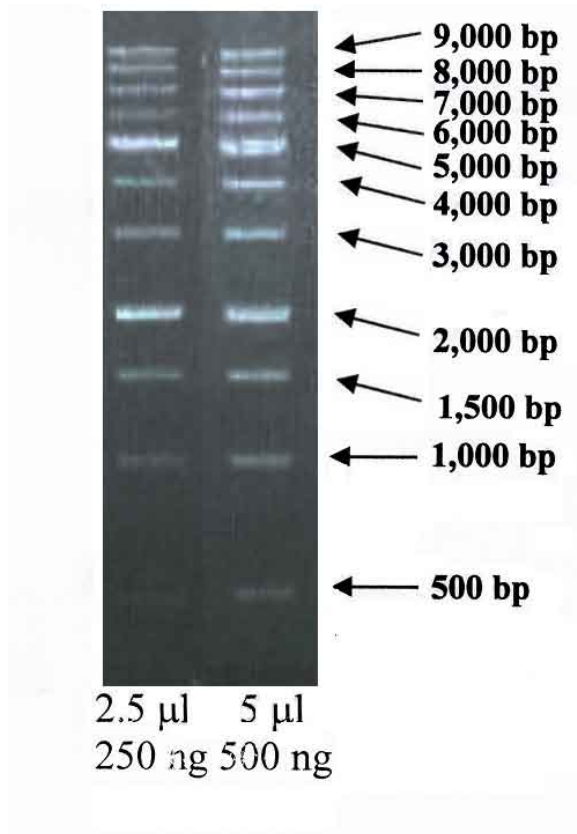
**Cat #:** kDNA-050, kDNA-250

## Description:

The 1 Kb DNA Ladder is suitable for sizing linear double-stranded DNA fragments from 500 bp to 9 kb. The ladder may be radioactively labeled by one of the following methods: (i) Partial exonucleolytic degradation and re-synthesis with T4 DNA polymerase (this method is preferred because higher specific activity is achieved with less <sup>32</sup>P input); (ii) Labeling the ends with T4 polynucleotide kinase; (iii) Filling in the recessed ends with *E. coli* DNA polymerase I or the large fragment of DNA polymerase I.

This ladder is premixed with Gel Loading Dye, Blue (6X) for direct gel electrophoresis.

## Figure:



## Application:

Determination of the molecular weight of nucleic acids.

## Concentration and Usage:

0.1 µg/µl and 5 µl per lane

**Storage:** Store at room temperature.

**Recommended Storage Condition:** -20°C